



Cancer Center

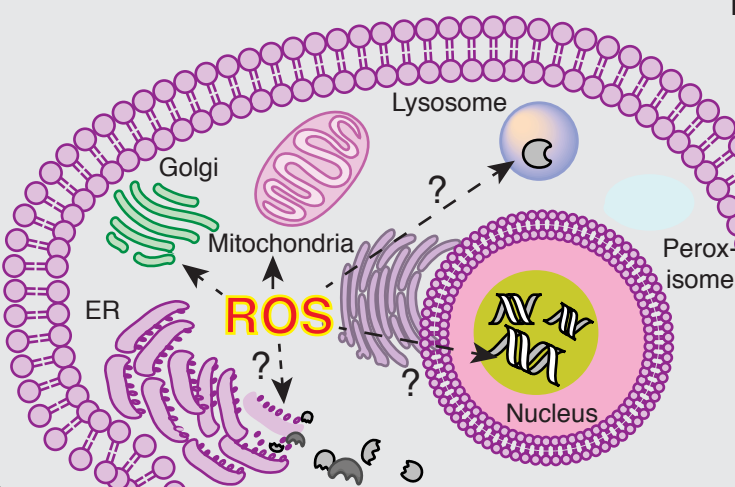


barpeledlab.org

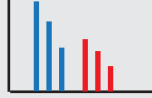


Deciphering organellar ROS in cancer

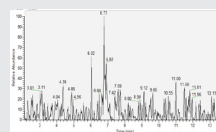
Technologies for studying organellar ROS



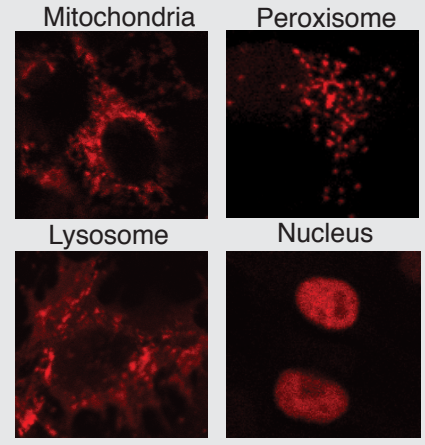
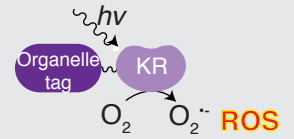
Functional organellar redox proteomics



Enrichment metabolomics

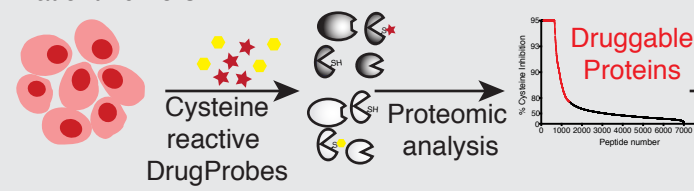


Targeted ROS generation and measurement



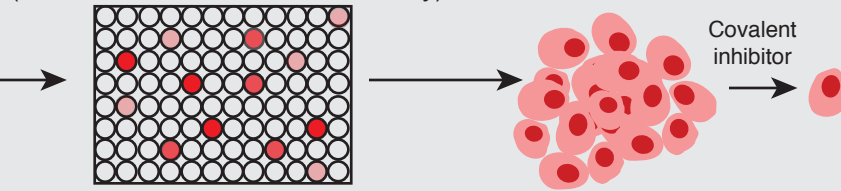
Identifying Druggable Targets in Cancer using Chemoproteomics (an 'omics' approach to drug discovery)

Cancer Cell Lines/
Patient Tumors



Cysteine Druggability Mapping (CDM)

Target-Specific Small Molecule Screen (advanced covalent inhibitors library)



Biological Characterization

